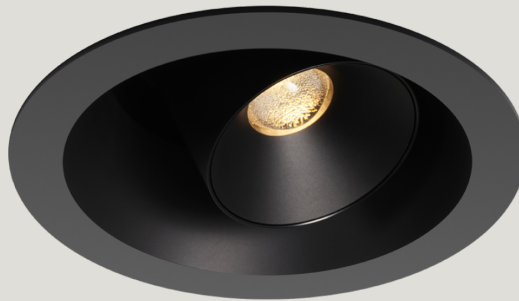
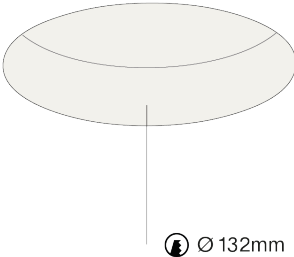


light only trim short installation instruction

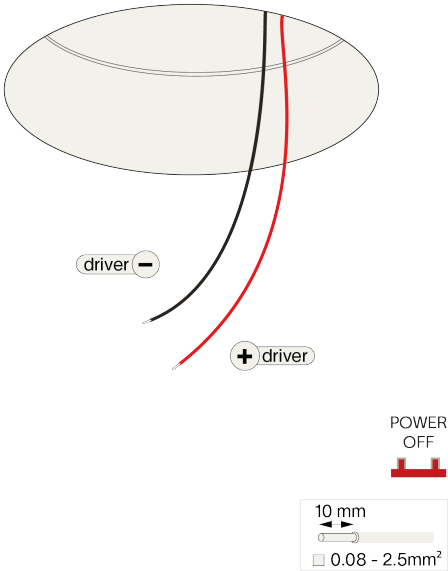


Step 1



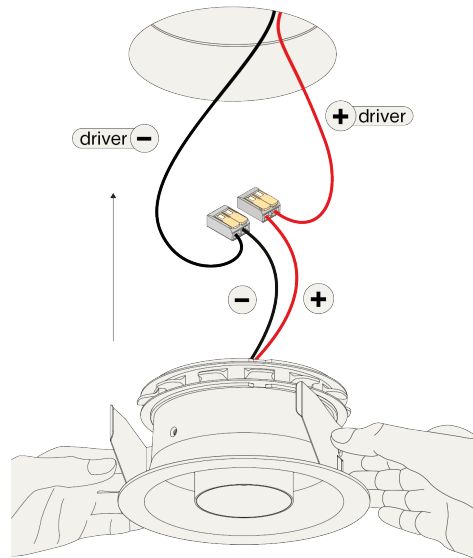
Cut a round hole (Ø 132 h 85).

Step 2



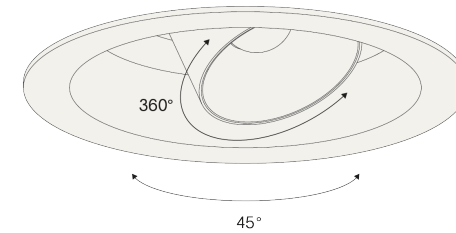
constant current (mA)	typical forward voltage (V)	typical power (W)
350	16,9	5,9
500	17,4	8,7

Step 3



Connect the wires with the connectors for serial connection, respect polarity combine with a prado LED-driver.

Step 4



POWER
ON

