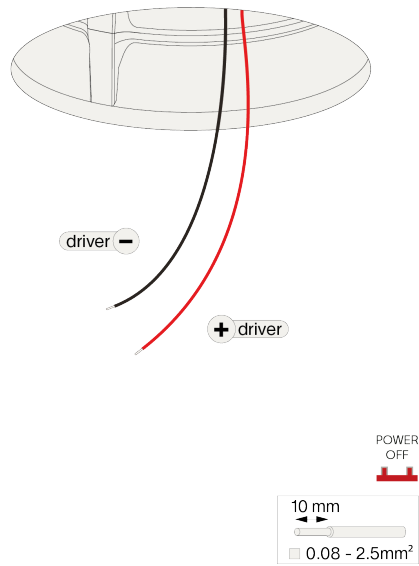


acrobat mini long installation instruction



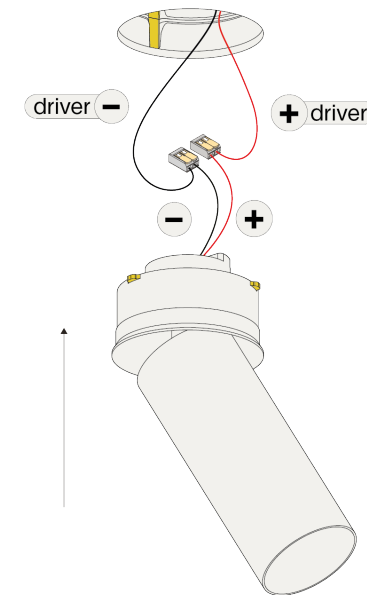
Step 1



| constant current (mA) | typical forward voltage (V) | typical power (W) |
|-----------------------|-----------------------------|-------------------|
| 350 | 16,9 | 5,9 |
| 500 | 17,4 | 8,7 |
| 700 | 18,2 | 12,7 |

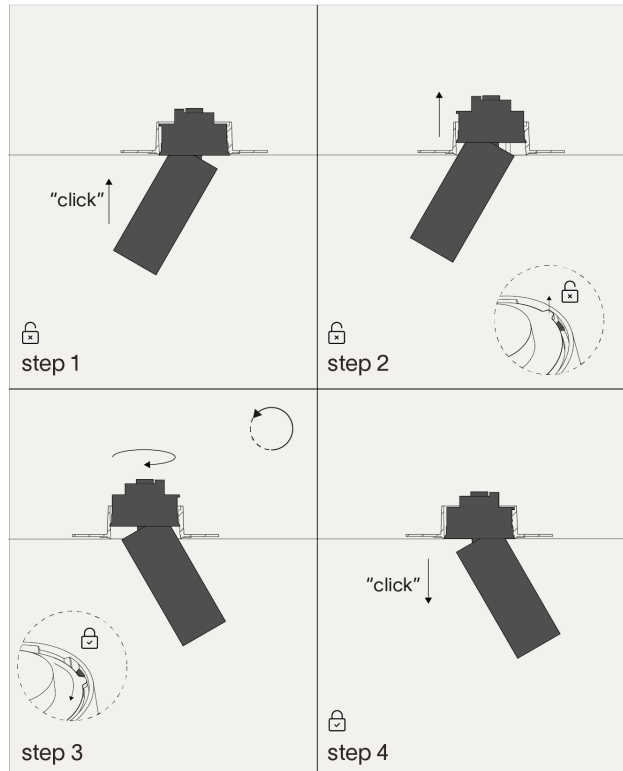
See packaging or fixture label for maximum current.

Step 2

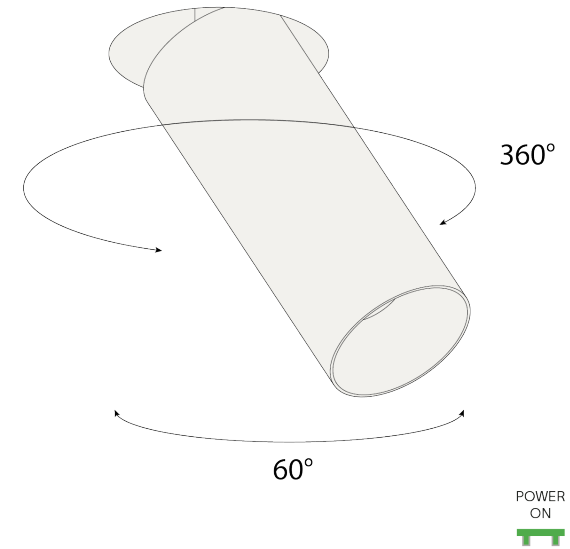


Connect the wires with wago connectors for serial connection, respect polarity combine with a prado LED-driver.

Step 3



Step 4



Insert the luminaire into the ceiling until it “clicks”. Push the luminaire a little further and twist it to lock it. Gently pull the luminaire down again. Now it’s locked.

Twist the luminaire as desired.

| | | | | | |
|--|--|--|--|--|---|
| | | | | | Replace glass lens when broken. Luminaire shall only be used together with glass lens. |
|--|--|--|--|--|---|