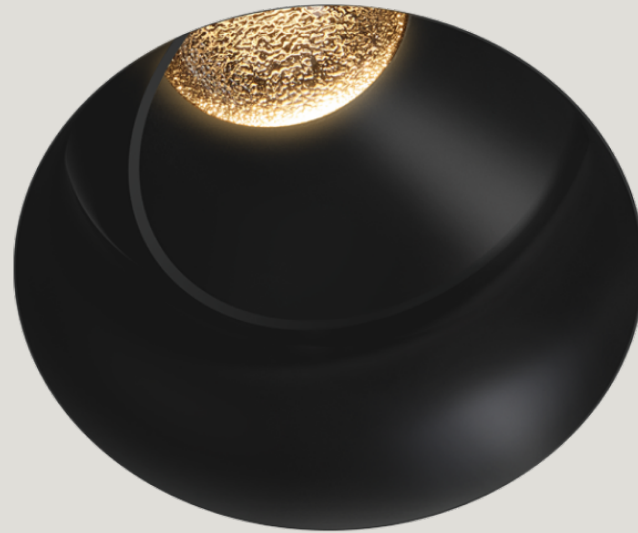
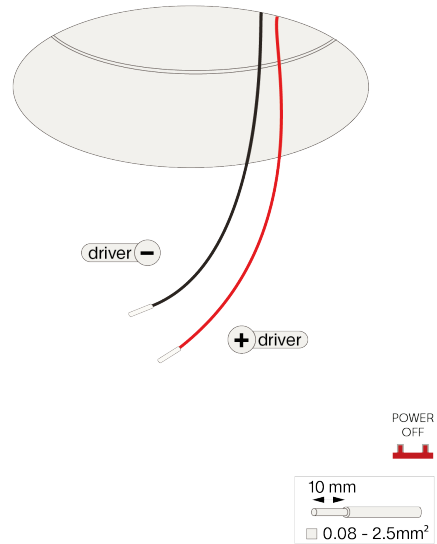


trimless spot adjustable

installation instruction

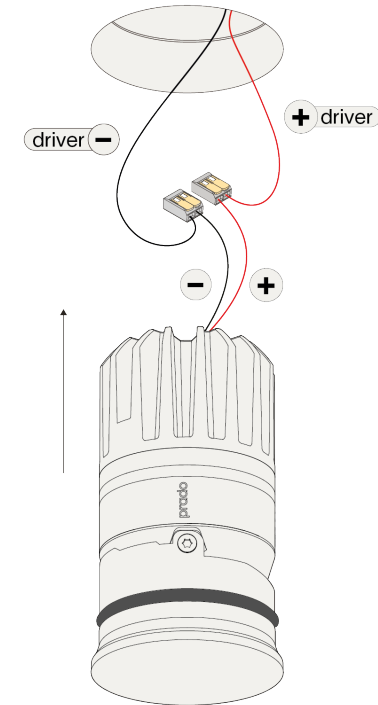


Step 1



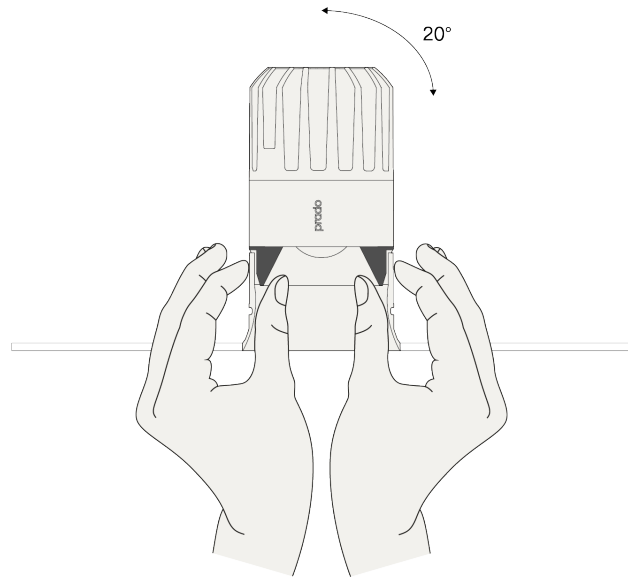
constant current (mA)	typical forward voltage (V)	typical power (W)
350	16,9	5,9
500	17,4	8,7
700	18,2	12,7
850	18,5	15,7

Step 2

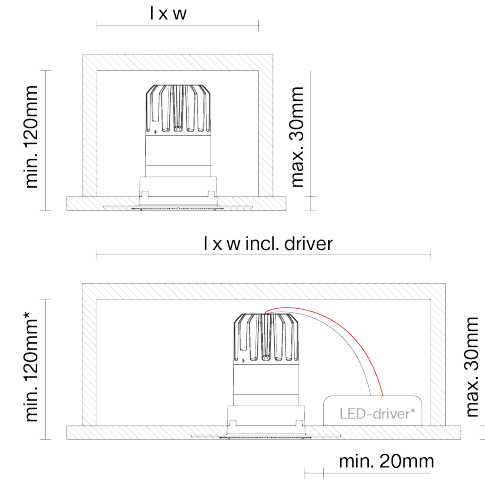


Connect the wires with the included connectors for serial connection, respect polarity combine with a prado LED-driver.

Step 3



Step 4



*make sure the selected driver fits thru the hole and inside the free air dimensions

constant current (mA)	l x W (mm)	l x W incl. driver (mm)
500	100 x 100	200 x 200
700	200 x 200	250 x 250
850	350 x 350	350 x 350

Twist the luminaire as desired.

			IP 44			Replace glass lens when broken. Luminaire shall only be used together with glass lens.
--	--	--	-------	--	--	---