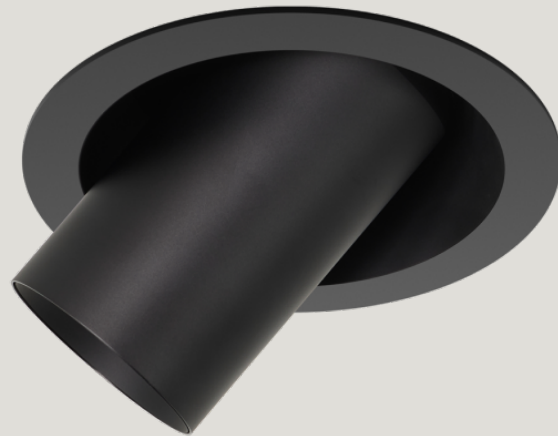
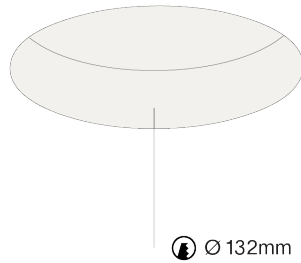


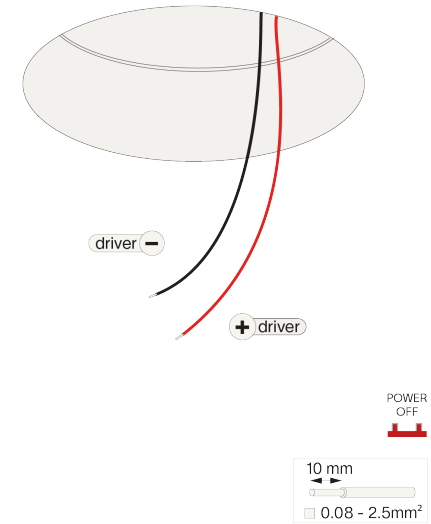
trim light only long installation instruction



Step 1



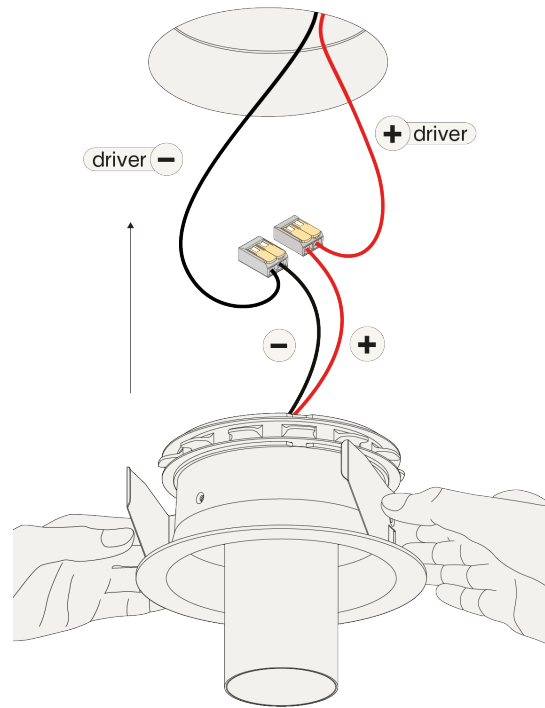
Step 2



constant current (mA)	typical forward voltage (V)	typical power (W)
350	16,9	5,9
500	17,4	8,7
700	18,2	12,7
850	18,5	15,7

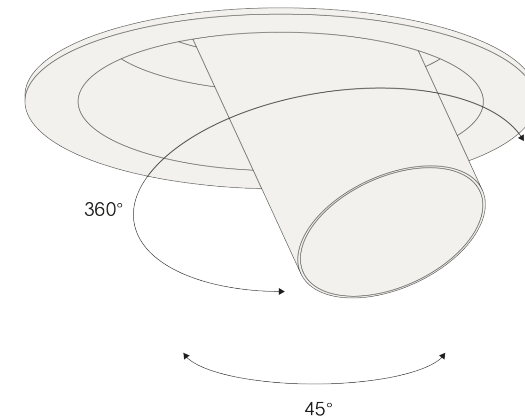
Cut a round hole ($\varnothing 132$ h 85).

Step 3



Connect the wires with the connectors for serial connection, respect polarity combine with a prado LED-driver.

Step 4



POWER
ON

Twist the luminaire as desired.