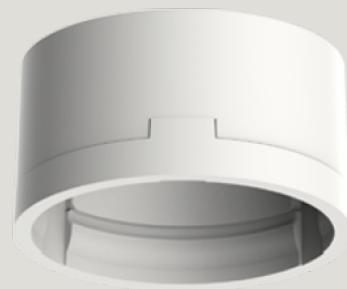
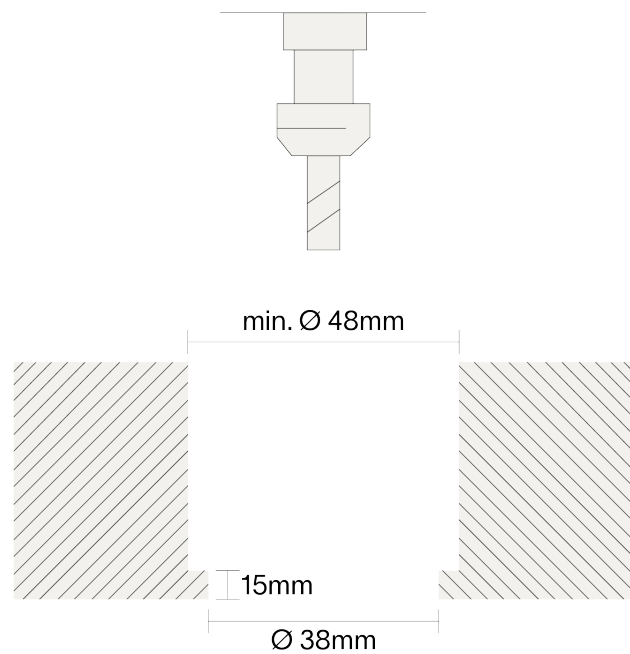


# clt csc ring Ø38

## installation instruction

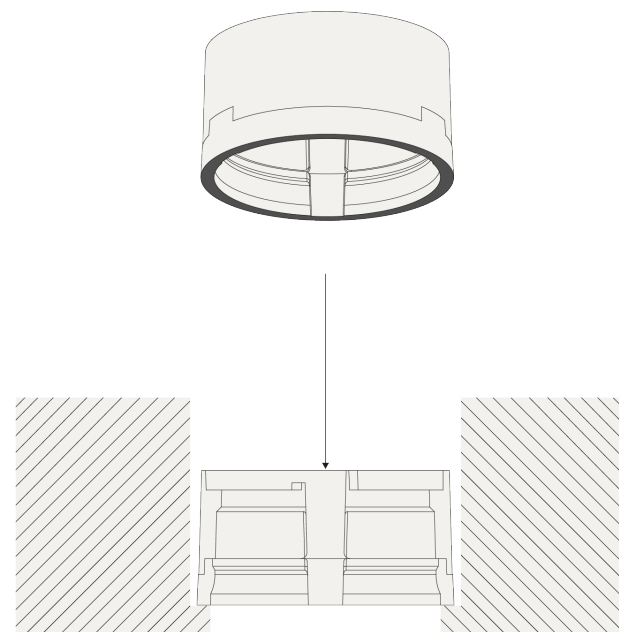


## Step 1



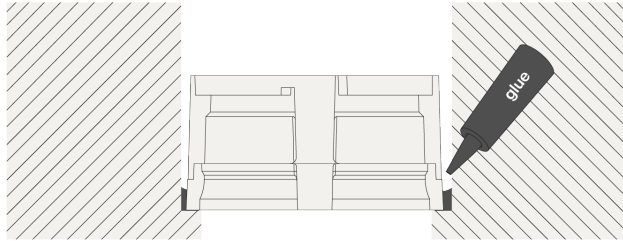
Mill a round hole with the above dimensions. Consult the chosen luminaire tech specs for required height and free air dimensions.

## Step 2



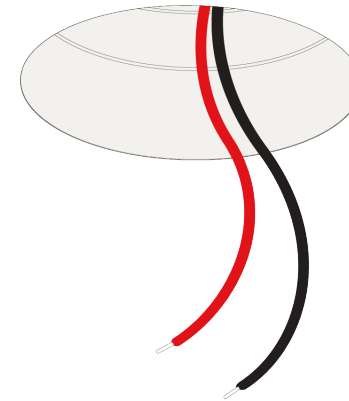
Place the clt ring in the hole, black side facing down.

## Step 3



Fixate the ring to the clt with the appropriate glue.

## Step 4



The fixture can now be installed.